

www.CRE-Marine.com
Tel: + 44 01224 872 445
Fax: + 44 01224 873 710
Email: sales@CRE-Marine.com



‘V’ Electrical Connector Subsea / Underwater / Marine

‘V’ Electrical Connector Subsea / Underwater / Marine

Introduction:

CRE has developed a wide range of metal shell connectors over the years focussed on delivering high reliability in tough environments. They are designed for heavy duty use in the most rigorous underwater applications on the planet. The design offers a high integrity sealing arrangement, metal key-ways, multiple options, size, pin quantity, voltage and current rating along with our ability to design specific solutions for your application.

Manufactured as standard from stainless steel or custom built with any material specified, they come with high open face pressure resistance. The standard connectors are rated to 6000m WD and are designed for use in moulded, oil filled and PBOF, in power, signal, and electro-mechanical applications.

Common applications:

- ROV, Resident ROV & AUV
- Manned underwater vehicles
- Aquaculture
- Renewables
- Ocean science/research
- Dive / depressurisation systems

Key features:

- Up to 14 contacts
- Mixed contact sizing options
- Custom solutions (contact qty/size/type, glass to metal)
- Rated for 6000m WD mated and open face as standard, higher pressure available on application
- Oil filled (OF) available as standard, pressure balanced oil filled (PBOF) available for certain pin configurations (connector & bulkhead assemblies)
- Working voltage and current dependent on contact density and diameter.

‘V’ Electrical Connector Subsea / Underwater / Marine

Part numbering:

Bulkhead example:

BR	V	07	M		0900	24	01	BP	Ti	
									*	M.O.C., SS std, Ti, AL, Pk etc.
									*	Back pressure (If required), PBOF
										Interface number
										Wire gauge
									*	Wire length in mm.(i.e 900mm), standard cores
										H / H2 / H3 if the connector has a hybrid option
										Male / Female
										Number of contacts, BC (Blanking Cap)
										Connector family 'A', 'B', 'C' etc.

BR - Bulkhead receptacle (Threaded)
FR - Flanged receptacle
RC - Moulded or oil filled receptacle
FC - Flanged moulded or oil filled receptacle.

Notes:

1. For standard assemblies, the part number structure indicated * above is left blank.
2. Where custom wiring is required, Engineering will issue a BA**** (Bulkhead Assembly Part Number) to substitute for the wire length/gauge in the part number structure. For example, in the part number above 090024 would be replaced by BA followed by a four digit number to create a unique identifier.

Component	Material
Bulkhead Body	Stainless steel 316L standard
Contact Insert	Epoxy or Glass to Metal
Electrical contacts	Leaded Nickel Copper C(&or K41)
Plating detail	1um Acid Gold over 2.5 um Nickel Copper Flash
Retaining nut/washer (optional, order if req.)	Stainless steel
Flange retainers (optional, order if req.)	Stainless steel
'O' Rings	Nitrile NI70 or as specified by customer

Notes:

1. Contact CRE for any special-order materials required

'V' Electrical Connector Subsea / Underwater / Marine

Part numbering:

Connector example:

PL	V	07	M		OF	4500	24	01	Ti	
									*	M.O.C., SS std, Ti, AL, Pk etc.
									*	Oil filled interface
										Wire gauge
										Moulded cable tail length in mm (i.e 4500mm), standard cores.
										Oil filled, PBOF (Pressure Balanced Oil Filled)
									*	H / H2 / H3 if the connector has a hybrid option
										Male / Female
										Number of contacts, BC (Blanking Cap)
										Connector family 'A', 'B', 'C' etc.
										PL - Plug in Line PR - Plug Right Angle

Notes:

- For standard moulded assemblies, the part number structure indicated * above is left blank.
- Where custom wired moulded tail is required, Engineering will issue a CA**** (Connector Assembly Part Number) to substitute for the wire length/gauge in the part number structure. For example, in the part number above 090024 would be replaced by CA followed by a four digit number to create a unique identifier.

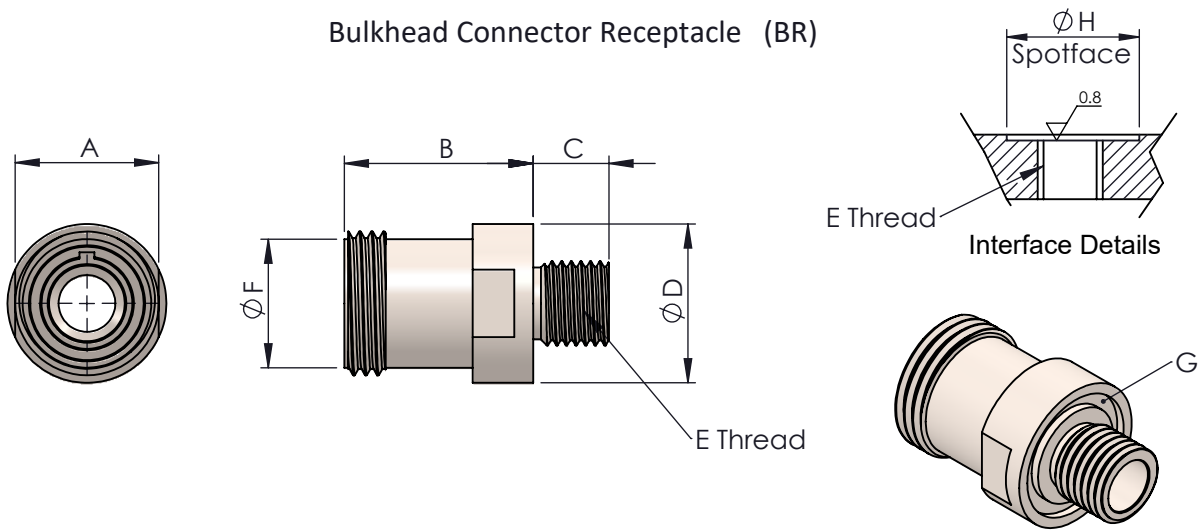
Component	Material
Connector Body	Stainless steel 316L standard
Locking Collar	Aluminium Nickel Bronze
Backing Washer	Acetal
Contact Insert	Epoxy or Glass to Metal
Electrical Contacts	Leaded Nickel Copper C(& or K41)
Plating detail	1um Acid Gold over 2.5 um Nickel Copper Flash
'O' Rings	Nitrile NI70 or as specified by customer

Notes:

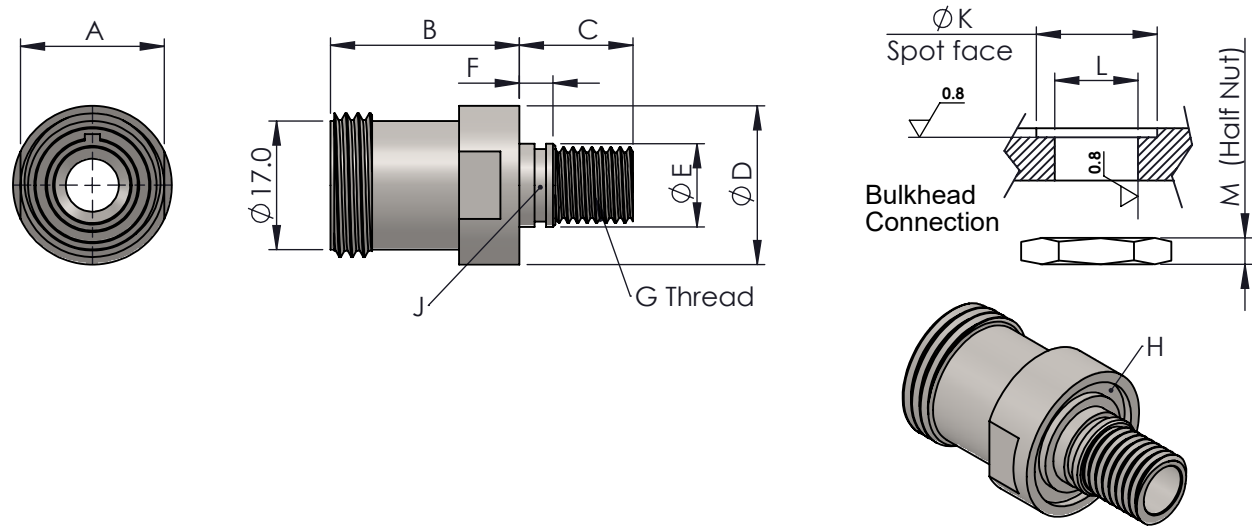
- Contact CRE for any special-order materials required

Reference Dimensions 'V' Connector

Bulkhead Connector Receptacle (BR)



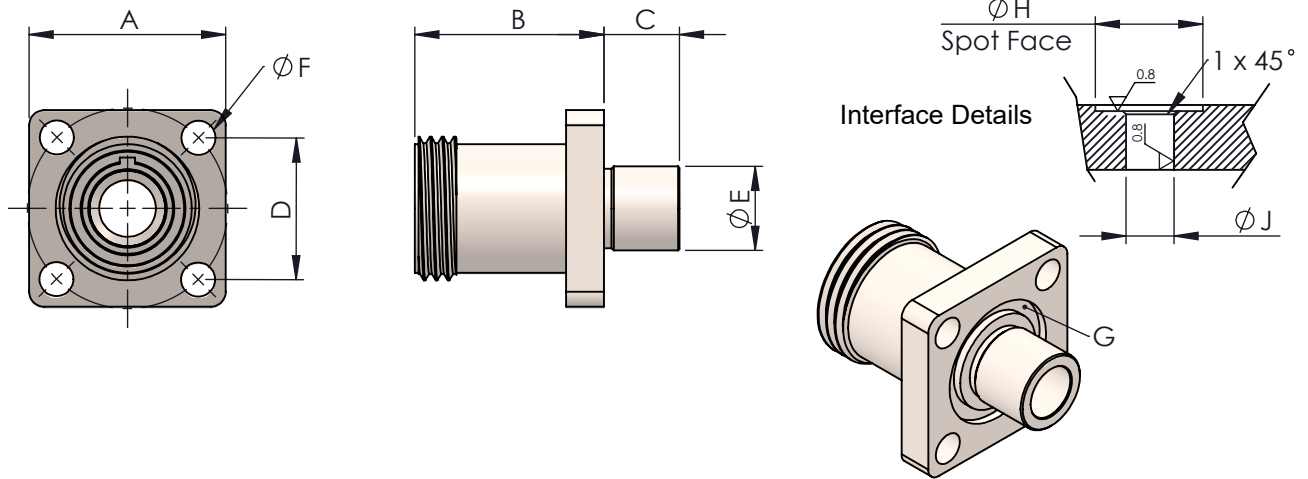
A	B	C	D	E	F	G-'O'Ring	H	TYPE
19	25	10	21	7/16"-20 UNF	17	14 x 1.5	22	01



A	B	C	D	E	F	G	H-'O'Ring	J-'O'Ring	K	L	M	TYPE
19	25	15	21	11	4.5	M10 x 1.5p	14 x 1.5	9 x 1	22	11.05/11.1	4	02

Reference Dimensions 'V' Connector

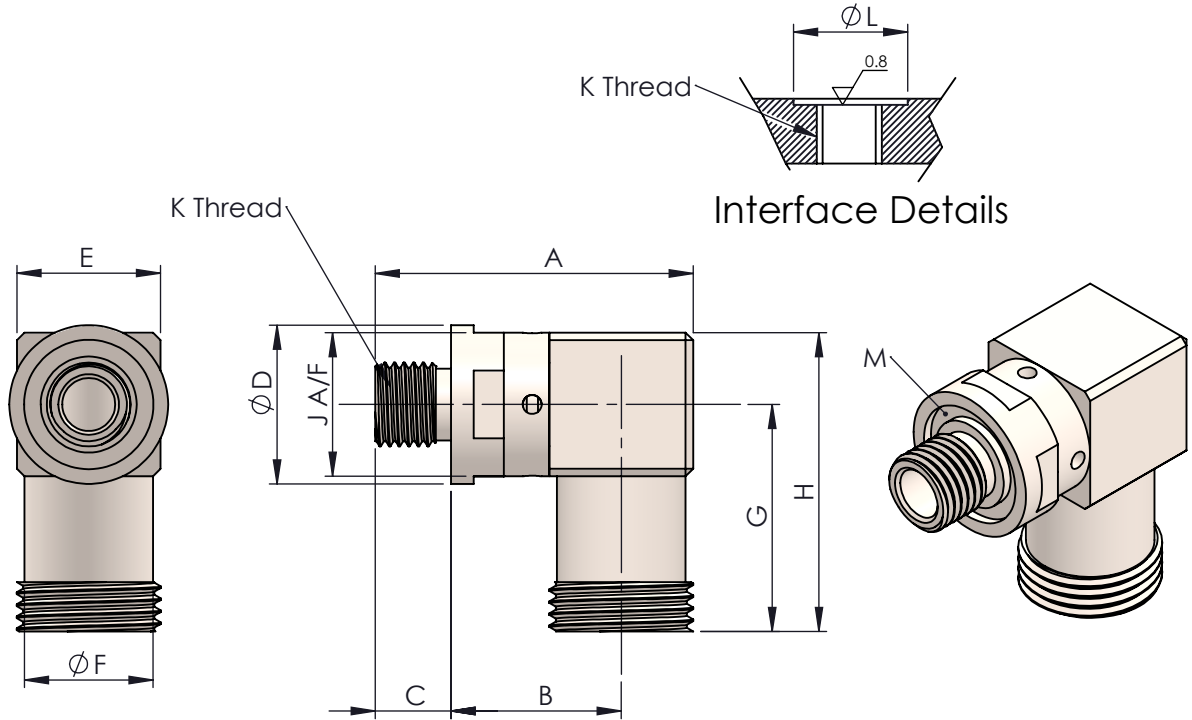
Flanged Bulkhead Connector Receptacle (FR)



A	B	C	D	E	F	G-'O'Ring	H	J	TYPE
26	25	10	18.7	11.1	4.5	14 x 1.5	36	11.1/11.127	01

Reference Dimensions 'V' Connector

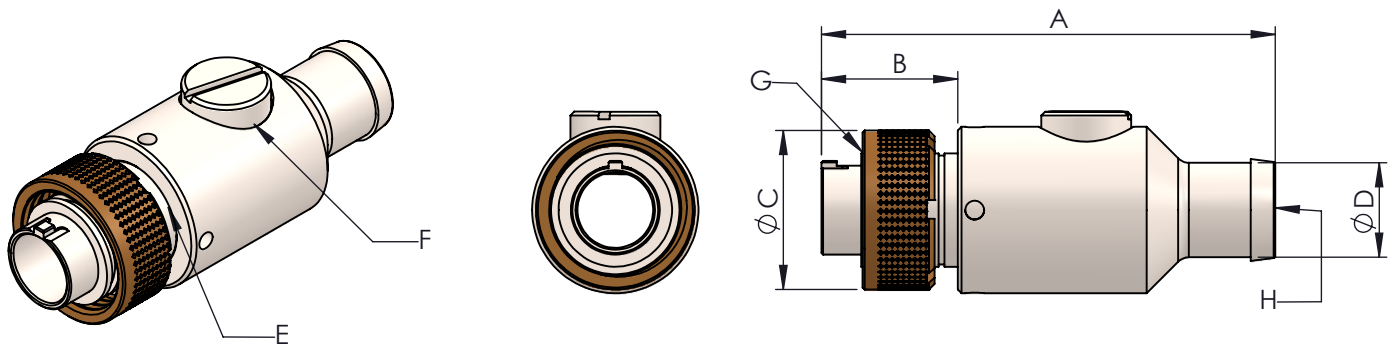
Low Profile 90° Bulkhead Connector Receptacle - Threaded (BR)



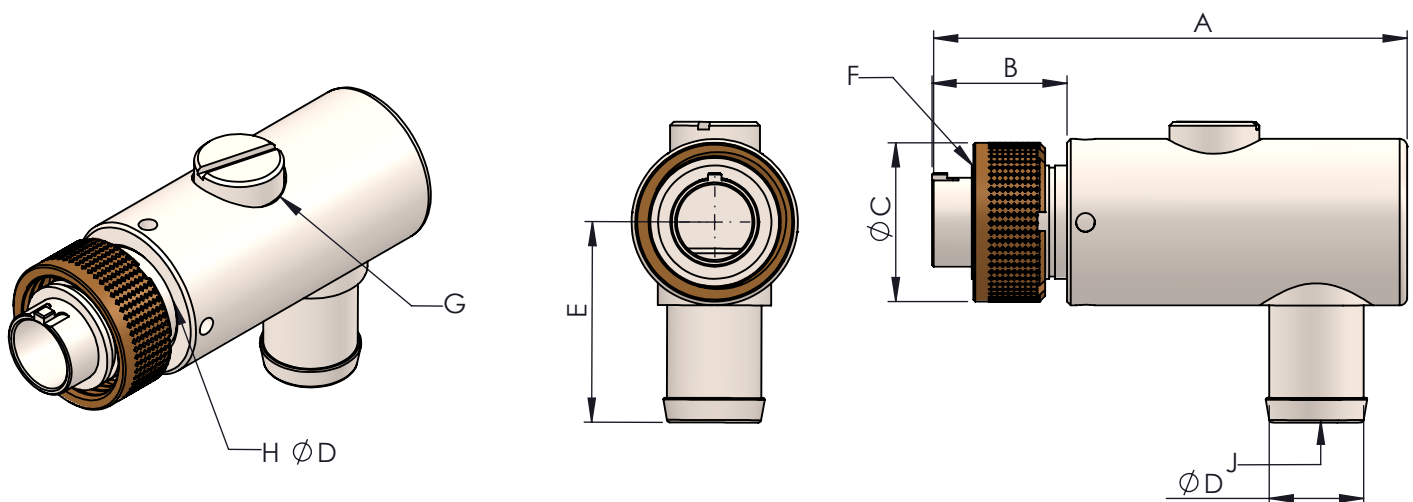
A	B	C	D	E	F	G	H	J	K	L	M-'O' Ring	TYPE
42	22.5	10	21	19	17	30	39.5	19	7/16"-20 UNF	22	10 x 1	LPT01

Reference Dimensions 'V' Connector

Backshell Cable Connector Receptacle (PL)



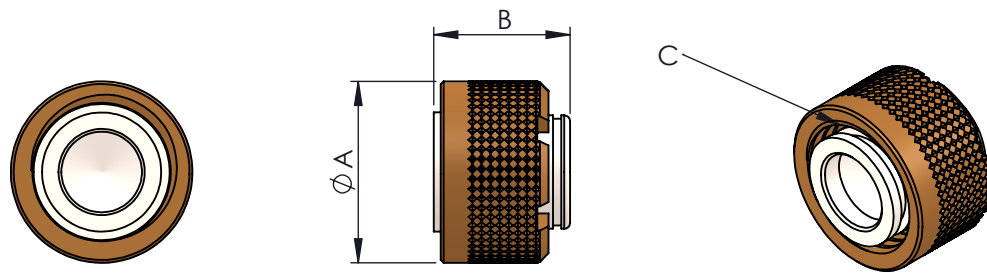
A	B	C	D	E-O'Ring	F-O'Ring	G-O'Ring	BORE H	TYPE
60	18	21	12.5	14.5 x 1.6	6 x 1.5	13.0 x 1.0	10	01



A	B	C	D	E	F-O'Ring	G-O'Ring	H-O'Ring	BORE J	TYPE
62.5	18	21	12.5	26.5	13.0 x 1.0	6 x 1.5	14.5 x 1.6	10	02

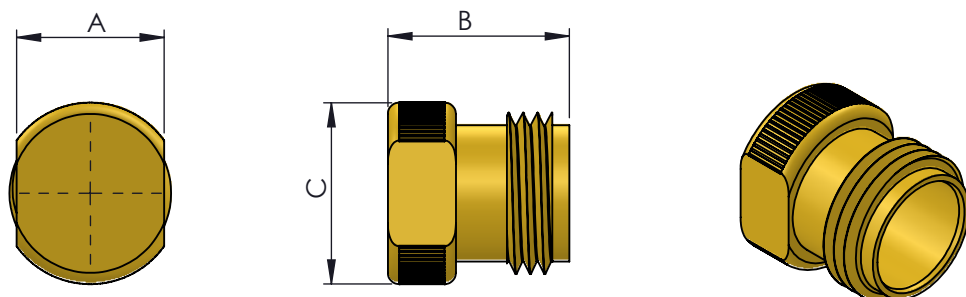
Reference Dimensions 'V' Connector

Bulkhead Blanking Plug - PLVBC



A	B	C-'O'Ring
21	12	13 x 1

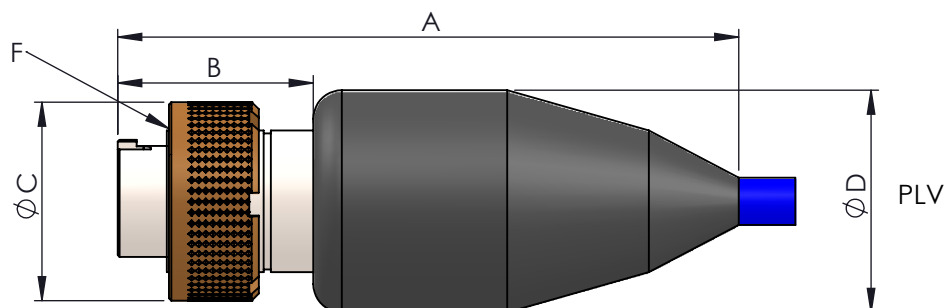
Cable Connector Blanking Plug - BRVBC



A	B	C
19	16	21

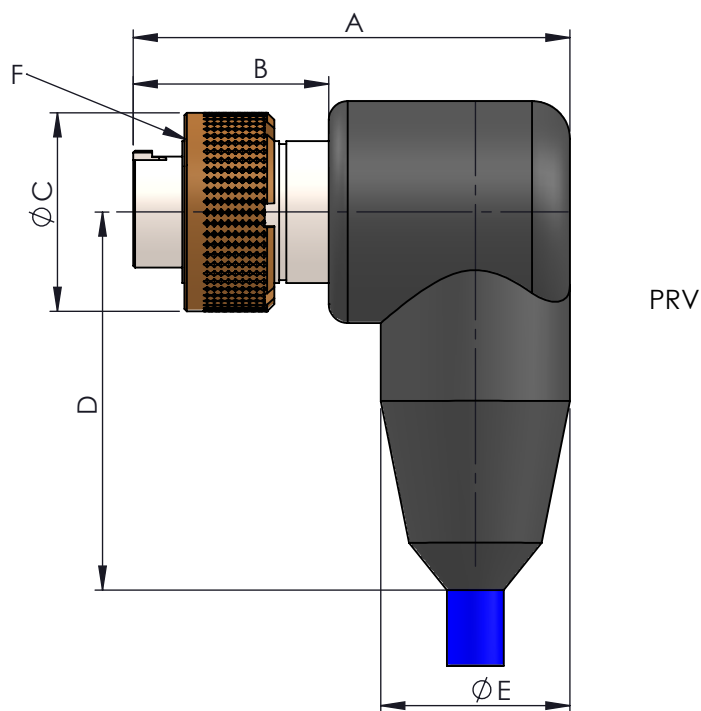
Reference Dimensions 'V' Connector

Moulded Cable Connector Receptacle-Straight



A	B	C	D	E-'O'Ring	TYPE
65	21	21	23.5	13 x 1	01

Moulded Cable Connector Receptacle-90°

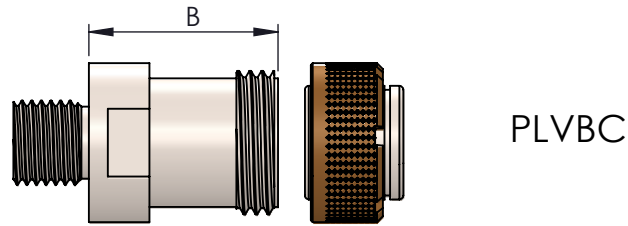


A	B	C	D	E	F-'O'Ring	TYPE
46	21	21	40	20	13 x 1	01

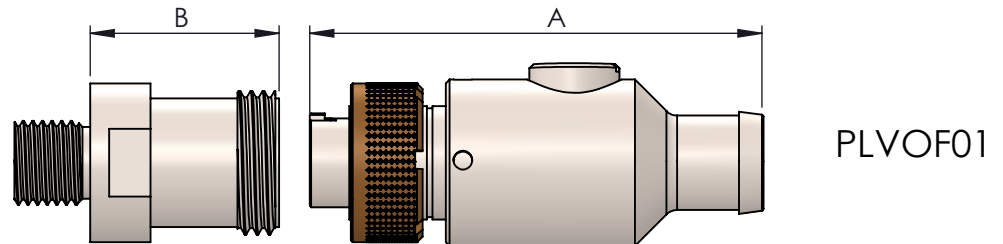
Mould Sizes Are Indicative

Note: Step files for design purposes available from engineering@CRE-marine.com

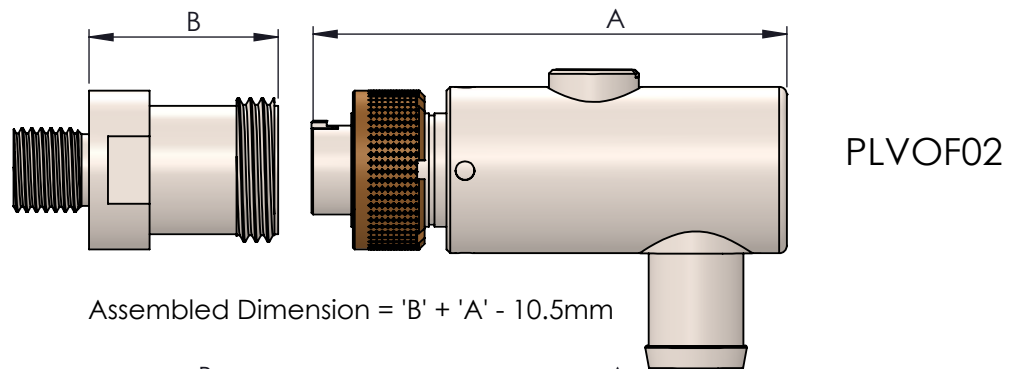
Assembled Dimensions 'V' Connector



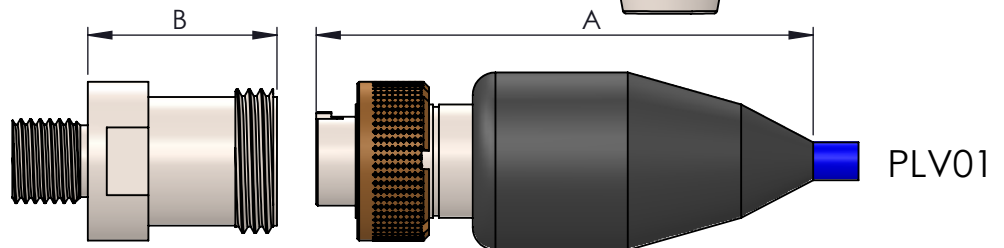
Assembled Dimension = 'B' + 6.5mm



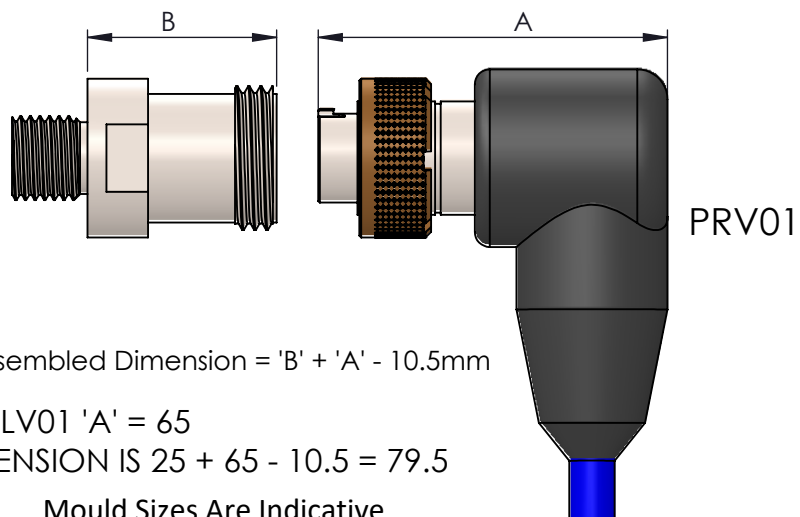
Assembled Dimension = 'B' + 'A' - 10.5mm



Assembled Dimension = 'B' + 'A' - 10.5mm



Assembled Dimension = 'B' + 'A' - 10.5mm



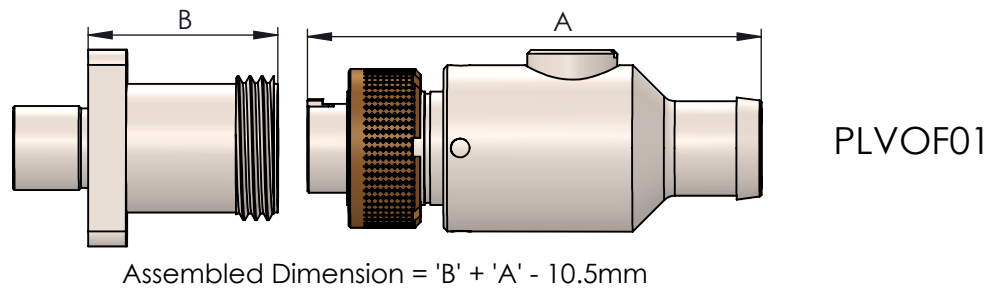
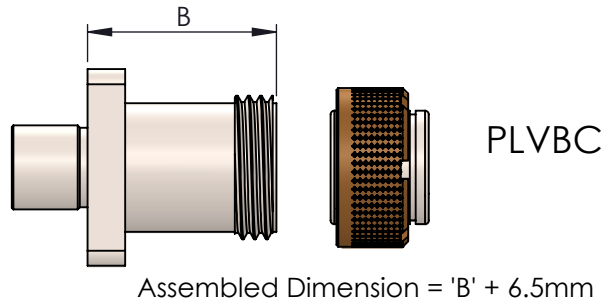
Assembled Dimension = 'B' + 'A' - 10.5mm

EXAMPLE: BRV01 'B' = 25.0, PLV01 'A' = 65
 THEREFORE ASSEMBLED DIMENSION IS 25 + 65 - 10.5 = 79.5

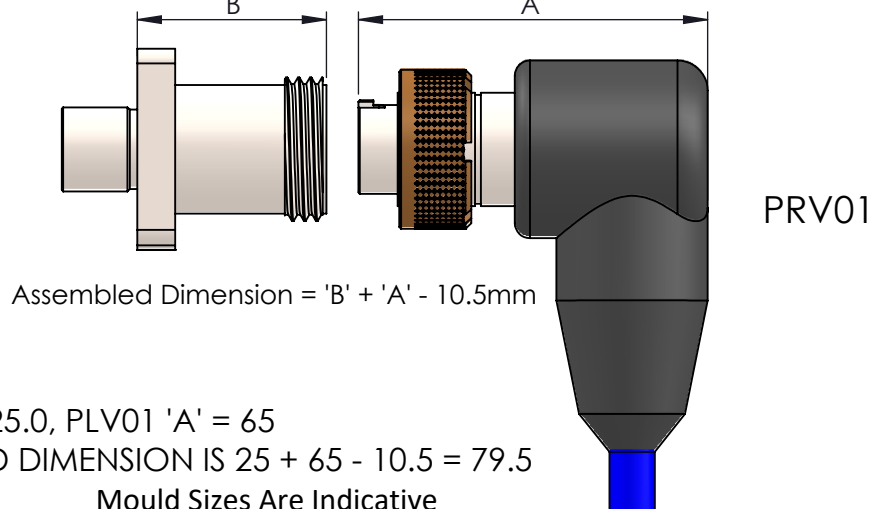
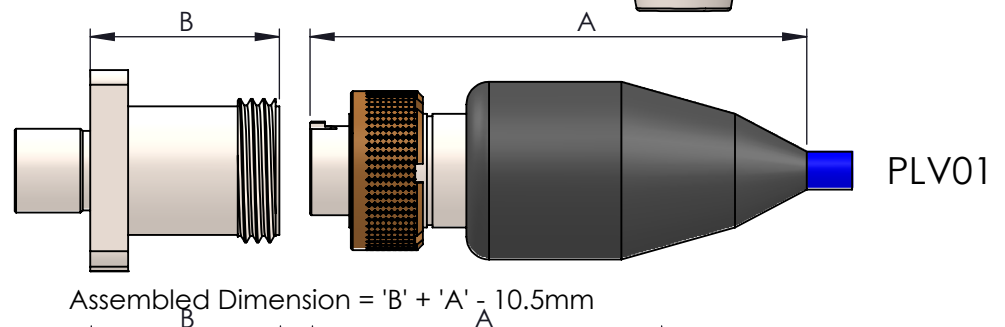
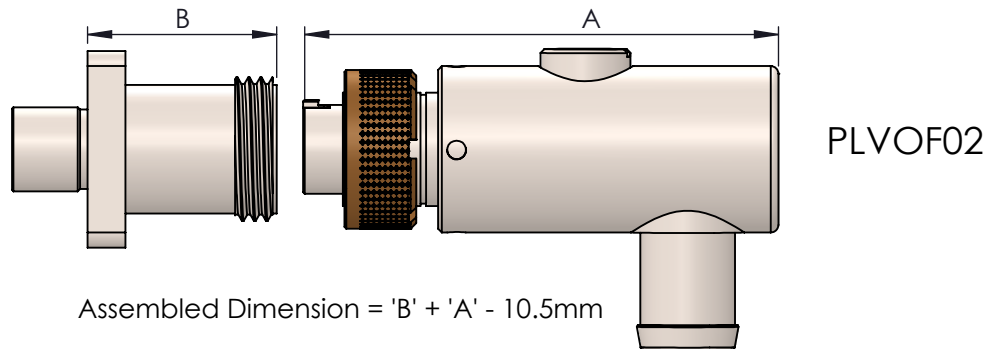
Mould Sizes Are Indicative

Note: Step files for design purposes available from engineering@CRE-marine.com

Assembled Dimensions 'V' Connector



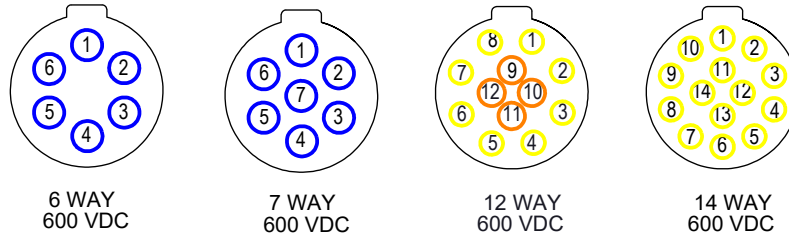
FLANGED BULKHEAD
FRV01



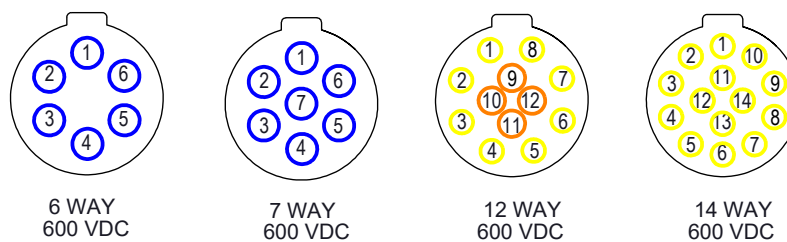
EXAMPLE: BRV01 'B' = 25.0, PLV01 'A' = 65
 THEREFORE ASSEMBLED DIMENSION IS 25 + 65 - 10.5 = 79.5
 Mould Sizes Are Indicative

Note: Step files for design purposes available from engineering@CRE-marine.com

Pin Face View



Socket Face View



CRE recommend using a mating Bulkhead or Connector tail when carrying out continuity testing on Connectors with the 0.75mm contacts to minimise the risk of accidental damage to the contacts

For current carrying capacity and wiring recommendations see page 14

Current Capacity and Wire Recommendations

- The wire options for bulkheads are governed by the through bore of the bulkhead body and the dimensions of the solder bucket on the contact.
- Heat, caused by an electrical current flowing through a conductor will determine the amount of current that the wire will handle.
- The current rating follows industry standards for a single wire in free air at 30 deg. C with derating for bundled wires.
- The table below shows the current required to raise the temperature of a single insulated conductor to the limits of its insulation temperature.

Contact dia.	0.75	1.0	1.56	1.9
Wire size	24 awg	22 awg	16 awg	14 awg
Current	8 amps	11 amps	26 amps	40 amps
Contact rating based on PTFE type C cable				

Derating Factors for Bundled Conductors	
Bundle #	Derating Factor (x Amps)
2 - 5	0.8
6 - 15	0.7
16 - 30	0.5

Recommended torque for threaded interfaces manufactured in 316L Stainless Steel assembled into metallic housings.

Thread	Torque N/m (Lubricated)	Torque Inch Pounds (Lubricated)
7/16-20 UNF	3-4	30-35

The table above shows the recommended tightening torque values for threaded bulkhead interfaces into metallic housings.

We recommend the use of a small quantity of anti-seize lubricant such as Copaslip applied to the pin thread as a lubricant to aid the make-up process.

Should you require any further information or advice please contact CRE direct on sales@cre-marine.com